



# THE SUMMIT ACADEMY

## 2023-2024 SCHOOL PROFILE

7575 W 103<sup>rd</sup> Avenue  
Westminster, CO 80021  
303.438.6985  
thesummitacademy.org

CEEB Code  
**060533**

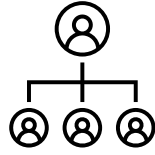
Principal  
**STEPHANIE SCARATO**  
sscarato@jeffcoschools.us

Assistant Principal  
**MAREN MILLER**  
maamille@jeffcoschools.us

The Summit Academy is a program of Jefferson Academy Secondary School through Jeffco Public Schools

### CULTURE

*Summit strives to create the best learning environment possible for every student and an outstanding workplace for our employees. We are a safe and caring environment where all who enter will be respected and treated with kindness. Summit is a positive learning environment where students, teachers, and staff are encouraged and supported to be their best every day in academics and character. Every student, family member, and employee is a valued individual.*



**9:1**

Student to Faculty Ratio



**839**

Total Enrollment



**55**

Graduating Class



**257**

High School Enrollment

### GRADUATION REQUIREMENTS



**ENGLISH**

**SOCIAL STUDIES\***

**MATH\*\***

**SCIENCE\*\*\***

**PHYSICAL EDUCATION**

**FINE ARTS**

23 total credits required for graduation

\*Includes 1 credit of World and U.S. History & .5 credits of Geography, Government, & Economics

\*\*Algebra 1 and higher

\*\*\*With labs

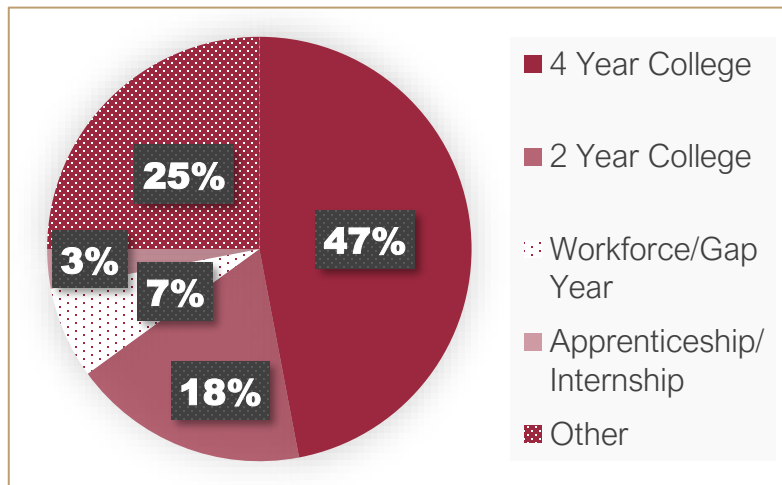
### GRADING SCALE

<b>A</b> (90-100%)	<b>4.0</b>	<b>5.0</b>
<b>B</b> (80-89%)	<b>3.0</b>	<b>4.0</b>
<b>C</b> (70-79%)	<b>2.0</b>	<b>3.0</b>
<b>D</b> (60-69%)	<b>1.0</b>	<b>2.0</b>
<b>F</b> (Below 60%)	<b>0.0</b>	<b>0.0</b>

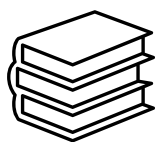
### CLASS OF 2023 GPA

- ☆ **4.51** Highest Weighted GPA
- **3.78** Median Weighted GPA
- ☆ **4.0** Highest Unweighted GPA
- **3.68** Median Unweighted GPA

### POST GRADUATE PLANS: CLASS OF 2023



# CONCURRENT ENROLLMENT PROGRAM



**193+**

Guaranteed  
Transfer Courses



**115+**

Certificates  
Available



**99.4%**

Pass Rate  
Spring 2023



**64%**

2023 Seniors in  
CE Program

The Concurrent Enrollment program through The Summit Academy affords high school students the opportunity to enroll in college courses while in high school. Students earn both high school and college credits while gaining experience on a community college campus. Colorado data show that students in Concurrent Enrollment programs are more likely to enroll in post-secondary education, have higher post-secondary grade point averages and retention rates, and have a decreased need for remediation.

## SAT SCORES

YEAR	STUDENTS TESTED	COMPOSITE	ENGLISH	MATH
2022	34	1107	574	533
2023	51	1153	599	554
<b>NATIONAL AVERAGE</b>	-	<b>1050</b>	<b>529</b>	<b>521</b>

## UNIVERSITY AND COLLEGE ADMISSIONS

- Arizona Christian University
- Arizona State University
- Ave Maria University
- Azusa Pacific University
- Baylor University
- Benedictine College
- Brigham Young University
- Colorado Christian University
- Colorado College
- Colorado School of Mines
- Colorado State University
- Cottey College
- Fort Lewis College
- Georgia Tech
- George Washington University
- Grand Canyon University
- Harvard University
- Harding University
- Hillsdale College
- Humboldt State University
- Long Island University
- Metro State University
- Missouri State University
- Montana State University
- Morningside College
- Northwestern College
- Oklahoma Baptist University
- Oklahoma Christian University
- Oklahoma Wesleyan University
- Pensacola Christian College
- Regis University
- Seattle Pacific University
- The King's College
- Trinity School of Natural Health
- University of Colorado, Boulder
- University of Colorado, Colorado Springs
- University of Colorado, Denver
- University of Northern Colorado
- University of Hilo
- University of Missouri
- University of Wyoming
- USMA, West Point
- Wheaton College
- William Penn University